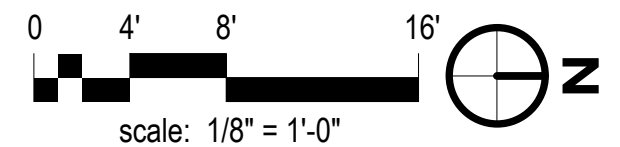


preliminary



Town of New Marlborough

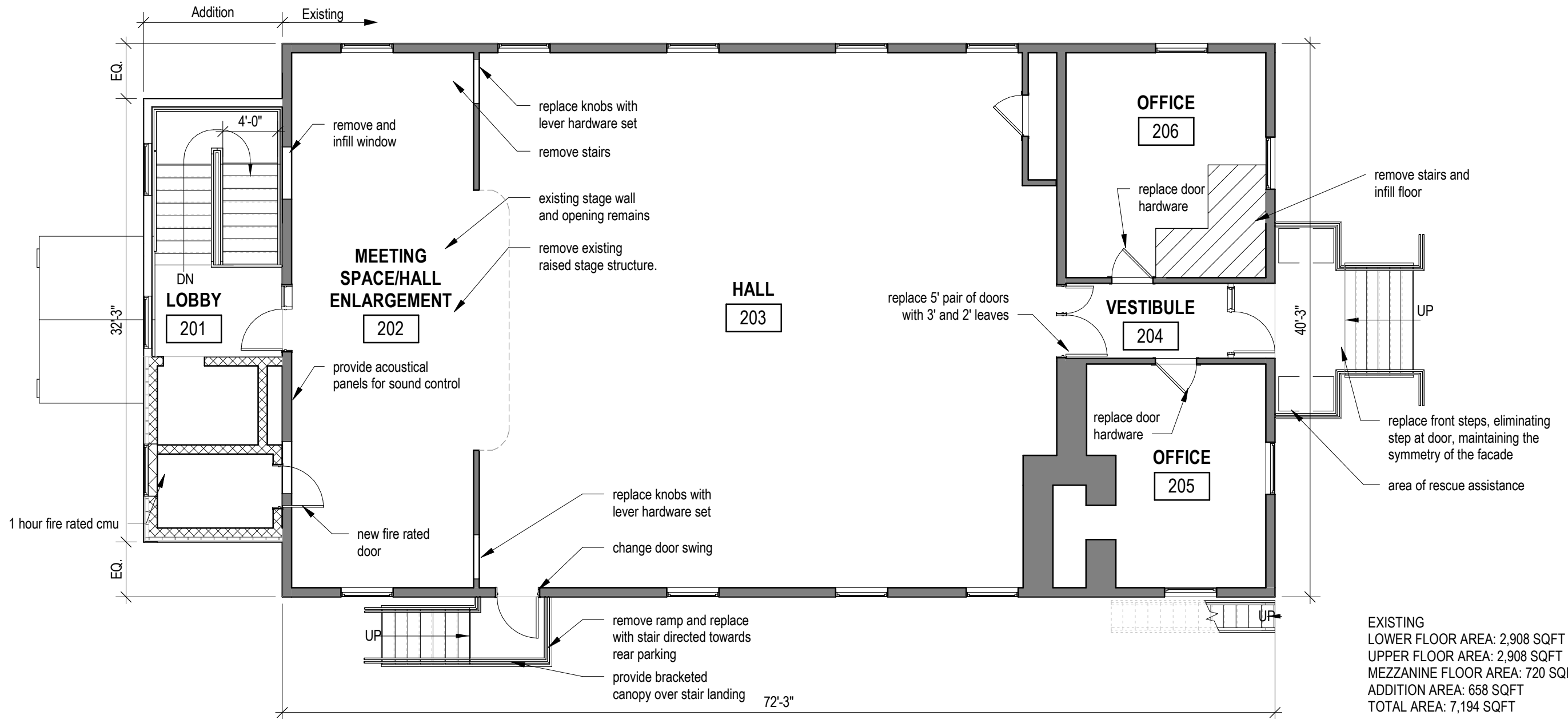
807 mill river southfield rd
mill river, ma 01244

Accessibility Designer Services
Town Hall

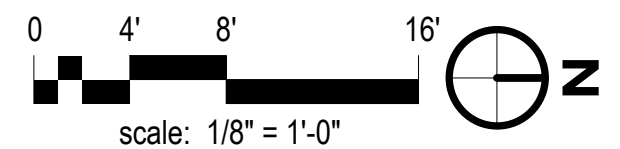
lower level plan

tnm - 5463
10/14/20

P-1



EXISTING
 LOWER FLOOR AREA: 2,908 SQFT
 UPPER FLOOR AREA: 2,908 SQFT
 MEZZANINE FLOOR AREA: 720 SQFT
 ADDITION AREA: 658 SQFT
 TOTAL AREA: 7,194 SQFT



preliminary



Town of New Marlborough

807 mill river southfield rd
 mill river, ma 01244

Accessibility Designer Services
 Town Hall

upper level plan

tnm - 5463
 10.14.20

P-2